

Peter Clarke

IN ASSOCIATION WITH

Winkworth

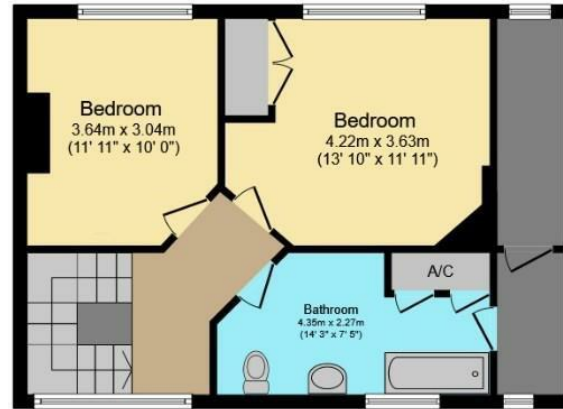


Meadowside, Wolverton, Stratford-upon-Avon, CV37 0HD

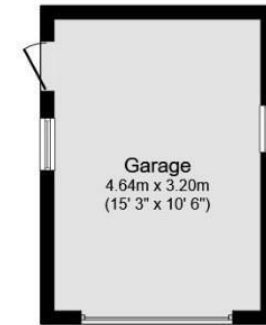
Meadowside, Wolverton, CV37 0HD



Ground Floor
Floor area 63.0 sq.m. (678 sq.ft.)



First Floor
Floor area 55.4 sq.m. (596 sq.ft.)



Garage
Floor area 15.0 sq.m. (161 sq.ft.)

Total floor area: 133.4 sq.m. (1435 sq.ft.)

This floor plan is for illustrative purposes only. It is not drawn to scale. Any measurements, floor areas (including any total floor area), openings and orientations are approximate. No details are guaranteed, they cannot be relied upon for any purpose and do not form any part of any agreement. No liability is taken for any error, omission or misstatement. A party must rely upon its own inspection(s). Powered by www.Propertybox.io

- Pretty semi-detached Edwardian country cottage
- Outstanding countryside views
- Approx 0.3 acre plot
- Beautifully kept, well stocked gardens
- Two/three reception rooms
- Two/three bedrooms
- Gated parking and garage
- Sought after peaceful small village location
- Potential for extension (STPP)



Guide Price £650,000

An exceptional two/three bedroom semi-detached Edwardian cottage on approx 0.3 acre plot with truly outstanding views of stunning rolling Warwickshire countryside. Beautifully kept mature and private gardens and felt to offer further potential for extension (STPP). Sought after village location.

ACCOMMODATION

A front door leads to

ENTRANCE HALL

with under stairs storage cupboard.

CLOAKROOM

with wc and wash basin.

SITTING ROOM

with bay window and French doors with stunning views of the gardens and countryside beyond. Limestone fireplace with multi fuel stove.

RECEPTION ROOM/BEDROOM THREE

with sealed fireplace.

DINING ROOM

with bay window to front, window shutters, slate floor. Open to

KITCHEN

range of fitted cupboards and granite work surface, Belling dual fuel range oven with six ring gas hob, hot plate and four electric ovens, ceramic sink, space for fridge, freezer, slate floor.

UTILITY ROOM

with space and plumbing for washing machine, Grant oil fired combi boiler, slate floor.

FIRST FLOOR LANDING

access to roof space.

BEDROOM ONE

with fitted wardrobe, window shutters and stunning views, wash basin.

BEDROOM TWO

with window shutters.

SPACIOUS BATHROOM

with wc, wash basin and bath with shower over, linen cupboards, downlighters, access to under eaves boxroom with windows to front and rear.

OUTSIDE

To the front there is double five bar gated entrance to a stone gravelled off road parking, with access to concrete section garage. There is a small fishpond with waterfall in the front garden

Mature and well stocked front garden with a range of large deciduous and evergreen trees. Unused well shared with neighbouring property. Gated access to side leading to rear garden.

STUNNING REAR GARDEN

with box hedging, covered gazebo with patio seating area enjoying far reaching views.







Sweeping grass pathways with deep evergreen shrub and perennial planted borders. Greenhouse, shed, herb garden and vegetable patch, hedging and adjoining fields.

GENERAL INFORMATION

TENURE: The property is understood to be freehold. This should be checked by your solicitor before exchange of contracts.

SERVICES: We have been advised by the vendor that mains electricity, water and drainage are connected to the property. However this should be checked by your solicitor before exchange of contracts. Oil heating to radiators.

RIGHTS OF WAY: The property is sold subject to and with the benefit of any rights of way, easements, wayleaves, covenants or restrictions etc. as may exist over same whether mentioned herein or not.

COUNCIL TAX: Council Tax is levied by the Local Authority and is understood to lie in Band E.

CURRENT ENERGY PERFORMANCE CERTIFICATE RATING: E. A full copy of the EPC is available at the office if required.

VIEWING: By Prior Appointment with the selling agent.



DISCLAIMER: HMR Homes Limited t/a Peter Clarke in association with Winkworth themselves and for the vendors or lessors of this property whose agents they are, give notice that the particulars are set out as a general outline only for the guidance of intending purchasers or lessors, and do not constitute part of an offer or contract; all descriptions, dimensions, references to condition and necessary permission for use and occupation, and other details are given without responsibility and any intending purchasers or tenants should not rely on them as statements or presentations of fact but must satisfy themselves by inspection or otherwise as to the correctness of each of them. Room sizes are given on a gross basis, excluding chimney breasts, pillars, cupboards, etc. and should not be relied upon for carpets and furnishings. We have not carried out a detailed survey and/or tested services, appliances and specific fittings. No person in the employment of HMR Homes Limited t/a Peter Clarke in association with Winkworth has any authority to make or give any representation of warranty whatever in relation to this property and it is suggested that prospective purchasers walk the land and boundaries of the property, prior to exchange of contracts, to satisfy themselves as to the exact area of land they are purchasing.





Multi-award winning offices
serving South Warwickshire & North Cotswolds

53 Henley Street, Stratford-upon-Avon, Warwickshire, CV37 6PT
Tel: 01789 415444 | stratford@peterclarke.co.uk | www.peterclarke.co.uk



Peter Clarke

AN ASSOCIATE COMPANY OF

Winkworth